

# TOPAZ INDUSTRO FLOAT VALVE

## PRODUCT INFO



# TOPAZ INDUSTRO

### FLOAT VALVE

### Description

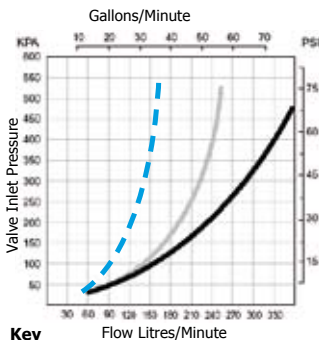
Topaz Industro Float Valves are designed to maintain water levels in applications requiring a valve with high mechanical strength and heat resistance. Some typical applications would be refilling cooling towers and storage tanks, high pressure cleaning and car wash systems as well as many light industrial, air conditioning and irrigation installations.

### Applications

Maintaining Water Levels in:

- Car wash systems
- Water Storage Tanks
- Water Cisterns
- Air Conditioning Systems
- High Pressure Cleaning Systems
- Irrigation Applications

### Flow Graph

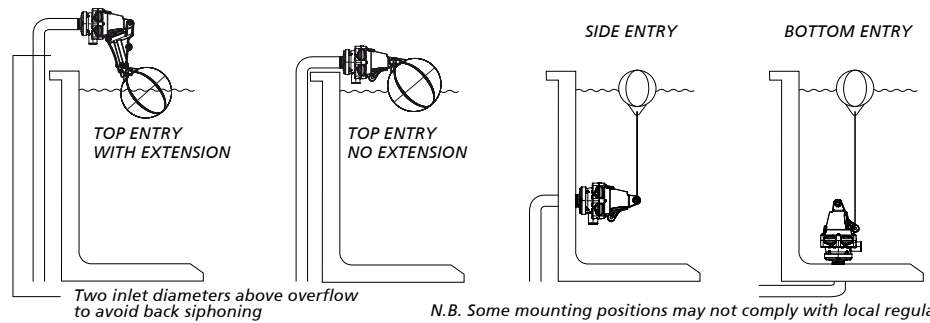


**Key**  
 - 15mm (1/2")  
 - 20mm (3/4")  
 - 25mm & 32mm (1" & 1 1/4")

### Features

- High flow
- Compact robust construction
- Maximum water temperature 80°C / 176°F
- Made from approved materials
- Mounts horizontally or vertically
- Made from corrosion resistant materials
- Shuts down slowly to minimise water hammer
- 20 - 60mm (3/4" - 2 1/2") water level differential (increases as water inlet pressure increases)
- Pressure rating 0.3 - 7 Bar (5 - 100 PSI)
- Float position easily adjustable with no tools
- Valve has switch to lock it in off position
- Has port to connect Frostpro anti freeze device

### Mounting Positions



### Options

	BSP			NPT			Specifies this Thread size
	3/4"	1"	1 1/4"	3/4"	1"	1 1/4"	
Inlet Size	3/4"	1"	1 1/4"	3/4"	1"	1 1/4"	
Detach Base Short Tail	✓	✓	✓	✓	✓	✓	Detach
Detach Base Long Tail	✓	✓	✓	✓	✓	✓	
<b>Long Tail:</b>	Supplied with backnut and seal washer 3/4" Long Tail: 38mm long.						
<b>Floats:</b>	125mm wide floats supplied standard. Note: Suitable for any mounting position						Standard
	70mm and 95mm floats optional Note: Suitable for top entry only.						Optional
							Optional
							125mm
							70mm
							95mm

### TOPAZ INDUSTRO FLOAT VALVE SPECIFICATION

PRODUCT	CODE	INLET SIZE	CODE	OPTIONS	CODE
Topaz Industro Float Valve	TIV	3/4" bsp/npt	20	Detach Base	D
		1" bsp	25	Long Tail Base	LT
		1" npt	1		
		1" 1/4" bsp	32	70mm wide Float	F70
		1" 1/4" npt	114	95mm wide Float	F95

(e.g) A Topaz Industro Float Valve with: 3/4" bsp inlet thread, detach base, long tail thread has the following spec number: TPVI 20 D LT  
 NOTE: If no options are specified the standard ones will be supplied

Note: Product may differ slightly from these specs due to ongoing product development.

200 L / MIN

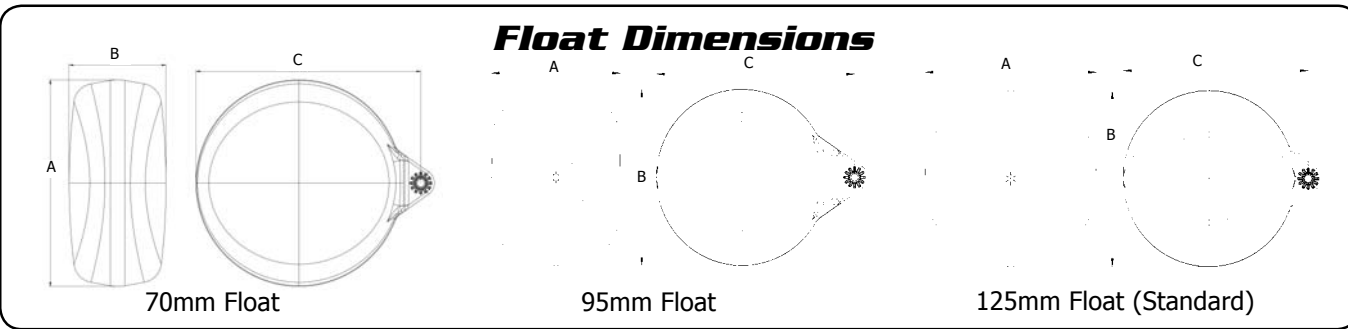
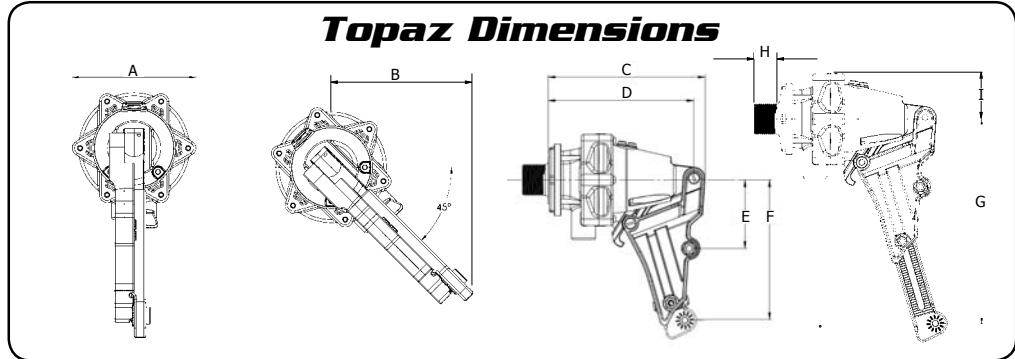
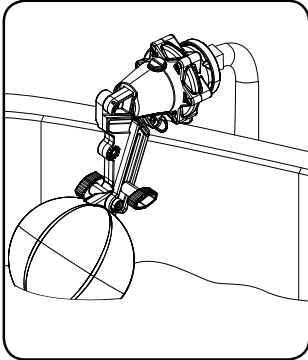
# TOPAZ INDUSTRO

## DIMENSIONS & MATERIALS



### TOPAZ INDUSTRO

FLOAT VALVE



200 L / MIN

<b>Topaz Dimensions</b>		
	mm	inches
A	88	3 1/2
B	100	3 15/16
C	134	5 1/4
D	124	4 7/8
E	58	2 9/32
F	119	4 11/16
G	176	6 15/16
H	3/4" Short tail	7/8
	1" bsp/npt short tail	7/8
	1 1/4" bsp/npt short tail	1
	1/2" long tail	4
	3/4" long tail	1 1/2
	1" bsp/npt long tail	2 1/8
	1 1/4" bsp/npt long tail	2 3/8
I	40	1 7/16

<b>Float Dimensions</b>								
70mm Float			95mm Float			125mm Float		
	mm	inches		mm	inches		mm	inches
A	70	2 3/4	A	95	3 3/4	A	126	4 15/16
B	149	5 7/8	B	130	5 1/8	B	130	5 1/8
C	162.5	6 13/32	C	145	5 3/4	C	136	5 3/8

<b>Materials</b>	
Valve Body	Grivory
White Internal Parts	TE21 Acetal
Filter	Acetal
Diaphragm	EPDM (HW Grade)
Valve Seal	Santoprene
Springs, Bolts, Nuts, Pin, Screws	304 Stainless Steel
Detach Seal	Santoprene
O'Rings	Nitrile
Float	HDPE
Float Cord	Polyester

Maximum Temperature of Operation 80°C / 176°F

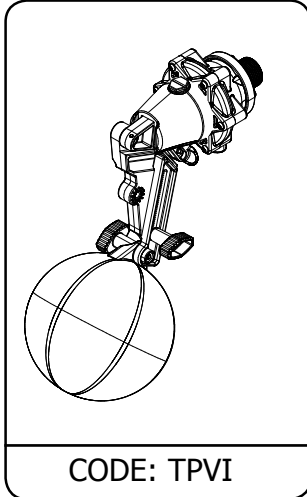
# TOPAZ INDUSTRO

## PARTS IDENTIFICATION SHEET

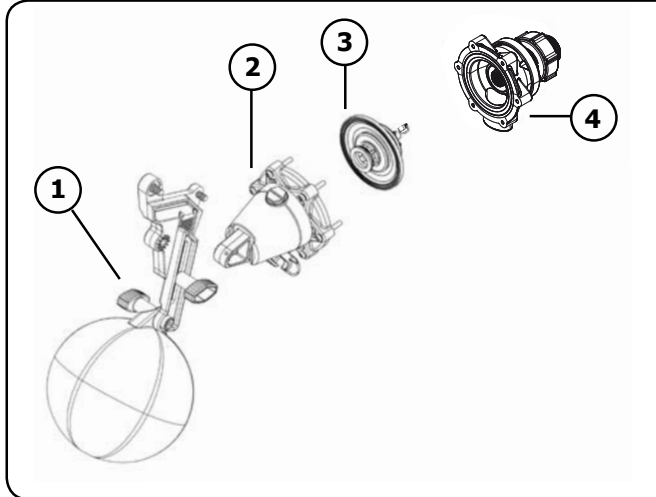


# TOPAZ INDUSTRO

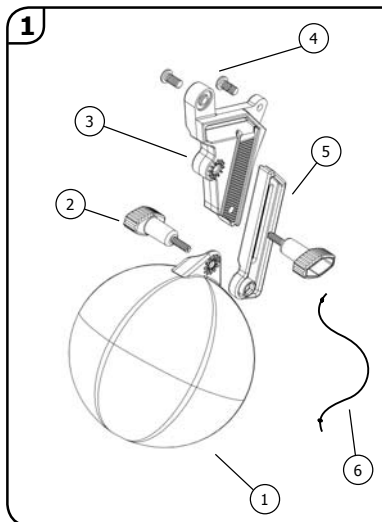
### FLOAT VALVE



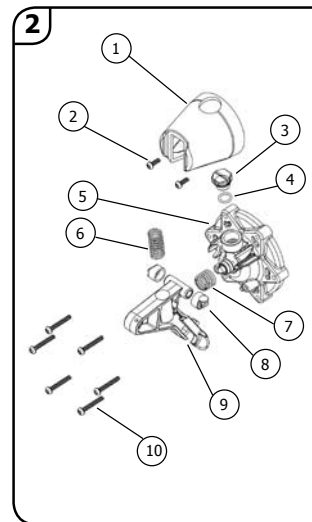
CODE: TPVI



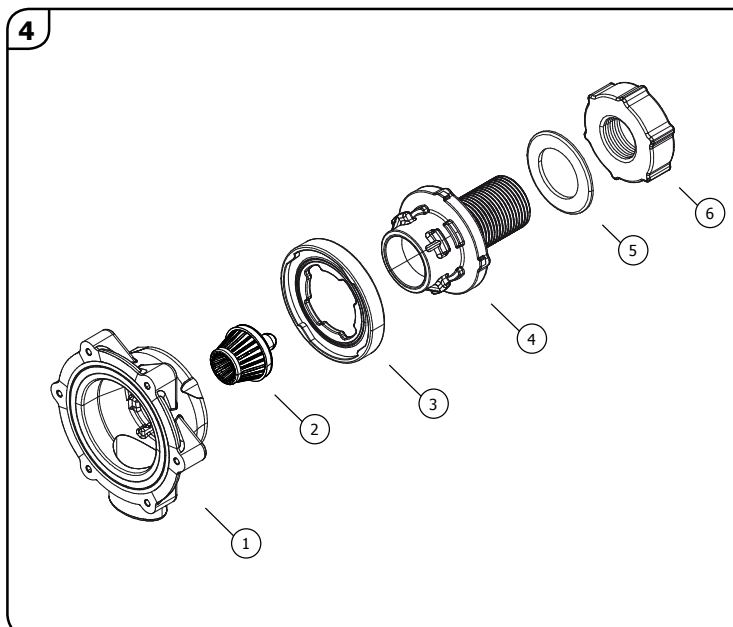
CODE	DESCRIPTION
1	TPPI1 Float Assembly
2	TPPI2 Cap & Actuator Assembly
3	TPPI3 Diaphragm Assembly
4	Detach Base Assembly



CODE	DESCRIPTION
1	TPPI10110 70mm Float TPPI10115 95mm Float TPPI10120 125mm Float
2	TPPI1020 Wing Bolt
3	TPPI1030 Extension Arm
4	TPPI1040 Bolt M5 x 12 Pan Slot
5	TPPI1050 Extension Slide
6	TPPI1060 Float Cord



CODE	DESCRIPTION
1	TPPI2010 Actuator Cap
2	TPP2020 6g x 10 S/S Screw
3	TPPI2030 Frost Pro Plug
4	TPP2040 Frost Pro O'ring
5	TPPI2050 Valve Cap Assembly
6	TPP2060 Actuator Spring
7	TPPI2070 Damping Spring
8	TPPI2080 Bearings (set of two)
9	TPPI2090 Actuator Arm
10	TPP2100 6g x 25 S/S Screw



CODE	DESCRIPTION
1	TPPI4A010 Detach Base
2	TPPI4A030 Detach Filter
3	TPP4A020 Detach Seal
4	TPPI4A0415 Detach Tail 20mm (3/4") Short TPPI4A0425 Detach Tail 25mm (1") Short TPPI4A0435 Detach Tail 32mm (1 1/4") Short TPPI4A0420 Detach Tail 20mm (3/4") Long TPPI4A0426 Detach Tail 1" npt Short TPPI4A0436 Detach Tail 1 1/4" npt Short
5	TPP4A051 Seal Washer 20mm (3/4")
6	TPP4A061 Backnut 20mm (3/4")

200 L / MIN