
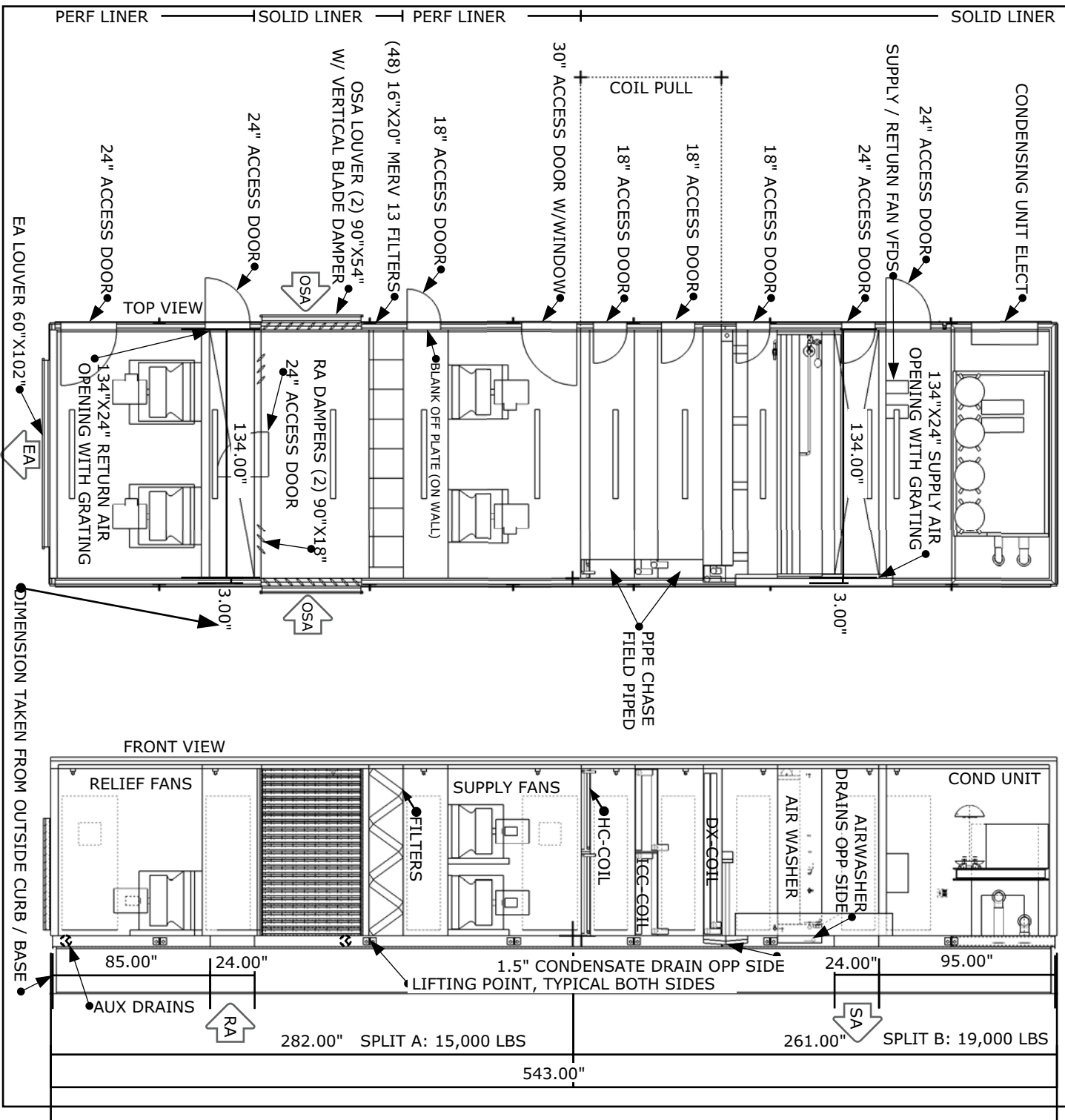
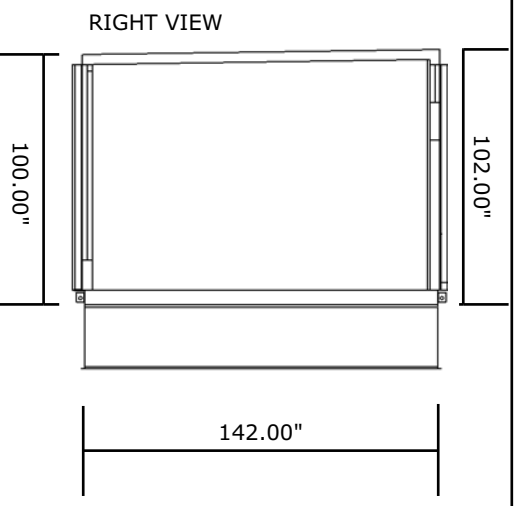


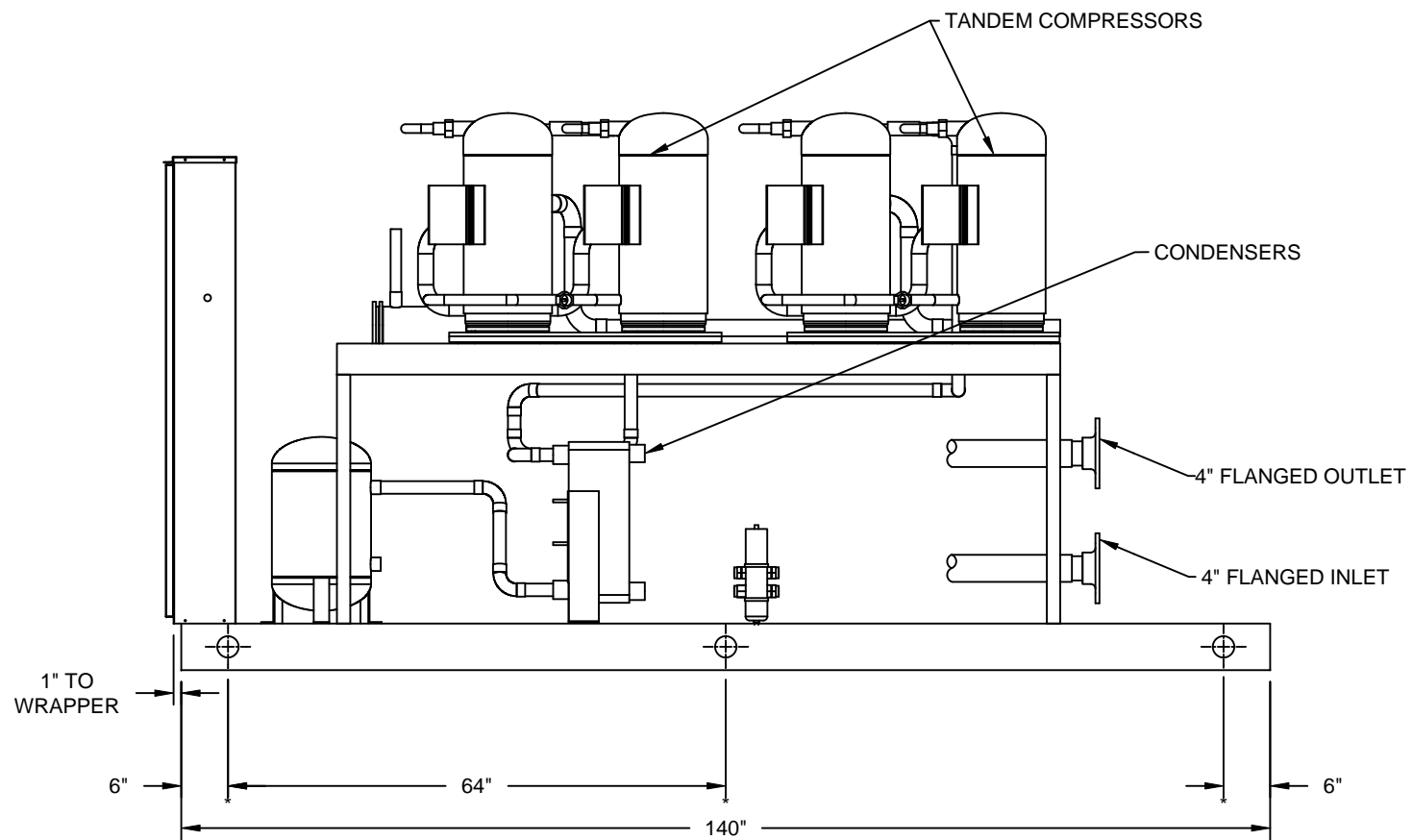
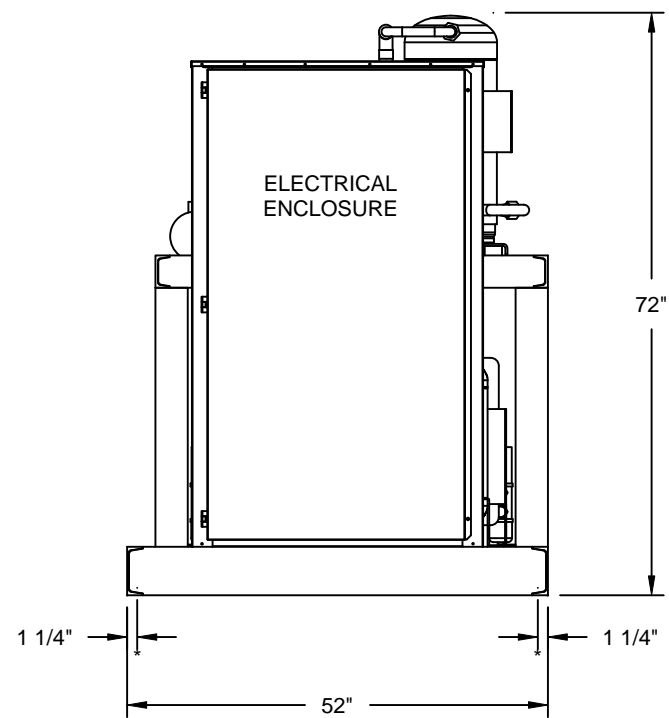
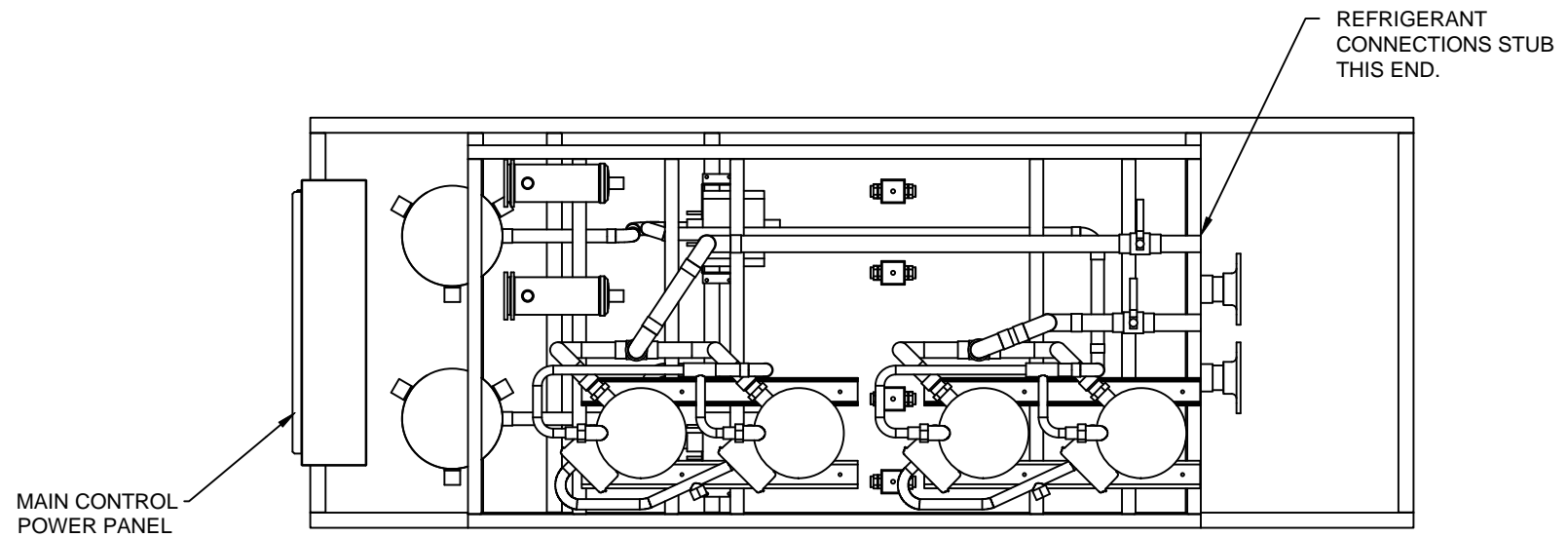
DRAWING NO. AHU-1	DRAWN BY. SWB	 UNITECH
JOB NO. -	CHECKED BY. -	

WEST JORDAN LIBRARY
AHU-1 (36,350 CFM) SUBMITTAL

REV.	DESCRIPTION	DATE	BY.
C	CHANGED CW COILS	3/16/11	SWB

SHIPPING WEIGHT = 34,000 LBS
*CURB NOT INCLUDED IN WEIGHT

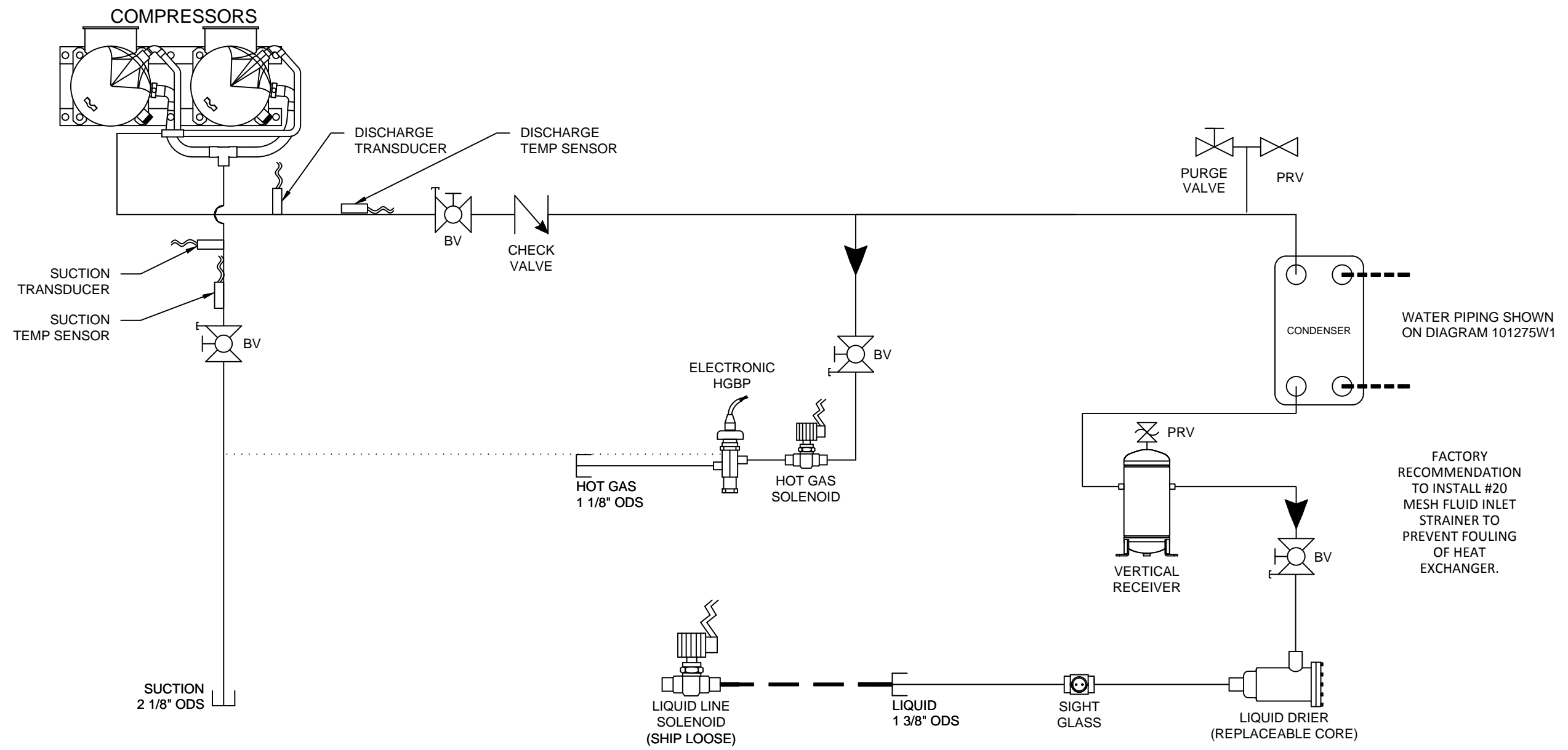




CHANGED PER CUSTOMER REQUESTS.

2-1/2"Ø RIGGING HOLES
 * 5/8" Ø MOUNTING HOLES
 EST SHIPPING WT. 3,984
 EST OPERATING WT. 3,884

TITLE: UNIT DRAWING 24WOLM88H410	SCALE: 1/2"=1'-0"	ENGINEERING APPROVED BY:	QUALITY CONTROL APPROVED BY:	DRAWN BY: CRB	REVISED BY:	DATE:	REV. NO:
	DATE: 12/17/10			FILE NO: ACAD2010	CRB	01/27/11	
	SUB-TITLE: PR 101275		DRAWING NUMBER: 101275U1				



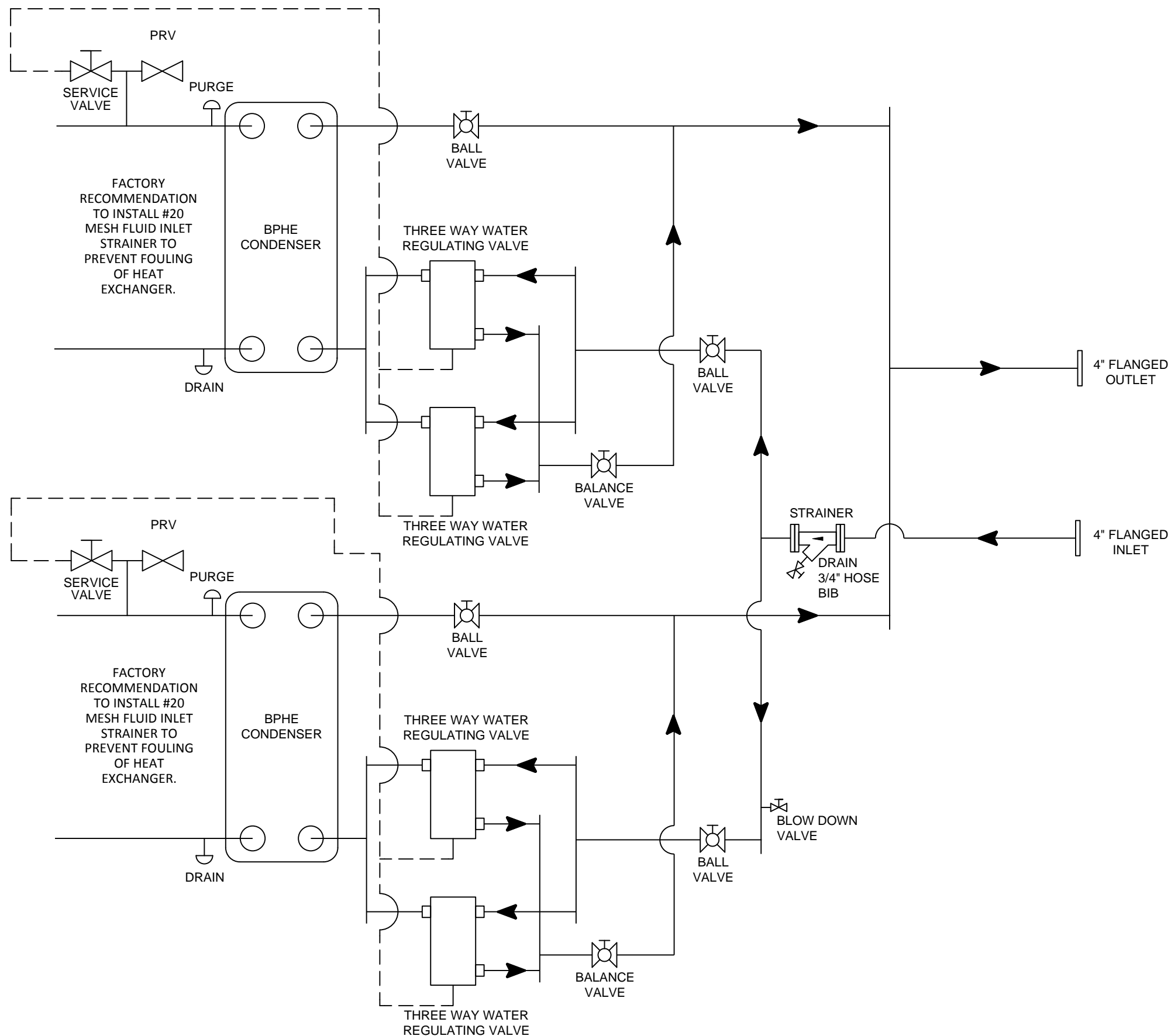
CIRCUIT 1 SHOWN, CIRCUIT 2 SAME LESS HGBP

NOTE:
 OIL SYSTEM PIPING -----
 EXTERNAL EQUALIZER LINE
 FIELD PIPING - - - - -

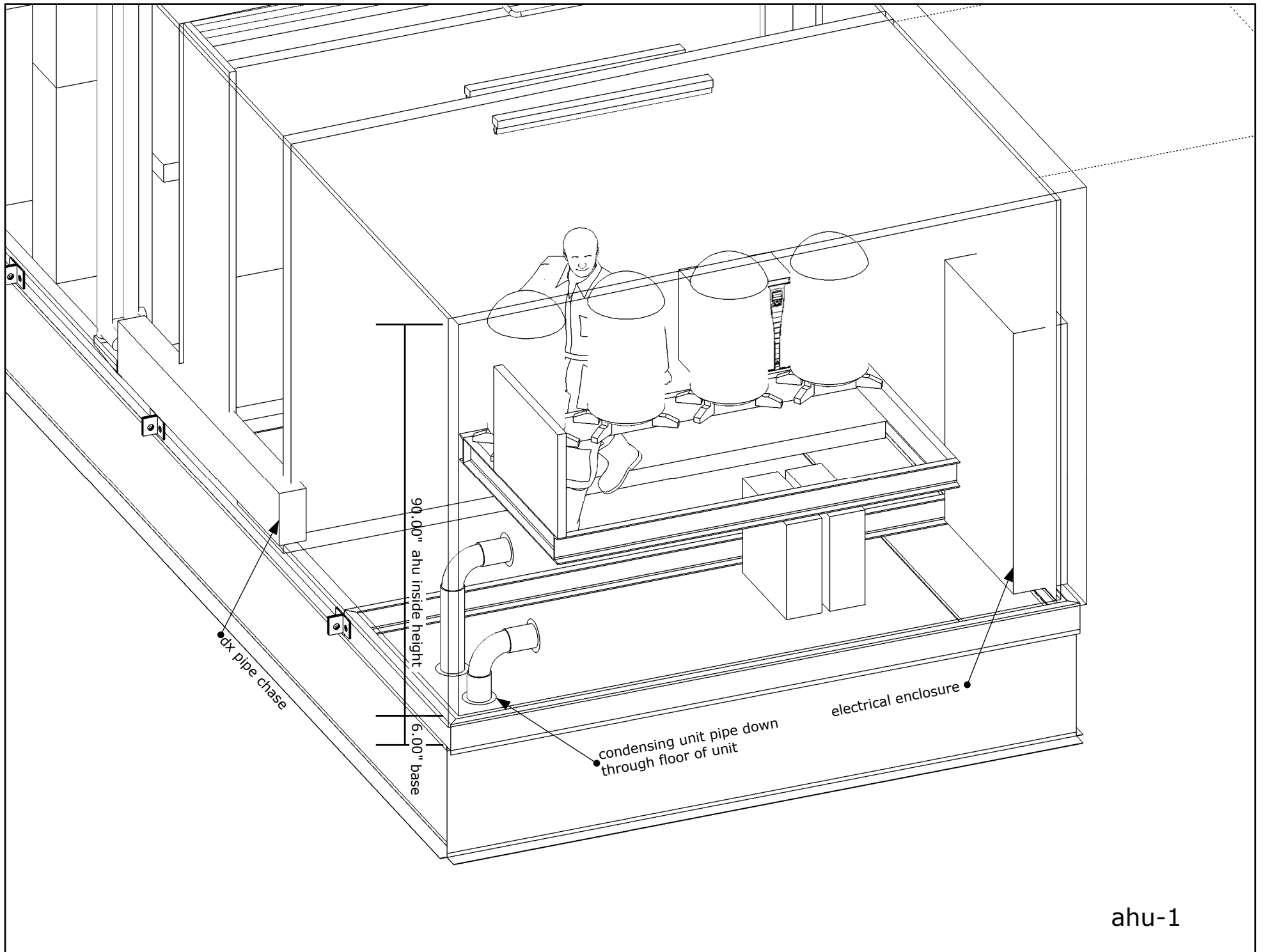
TITLE: REFRIGERANT PIPING 24WOLM88H410	SCALE: NONE	ENGINEERING APPROVED BY:	QUALITY CONTROL APPROVED BY:	DRAWN BY: CRB	REVISED BY:	DATE:	REV. NO:
	DATE: 12/16/10			FILE NO: ACAD2010			
	SUB-TITLE: PR 101275			DRAWING NUMBER: 101275P1			

NOTES

1. COPPER TUBING EMPLOYED THROUGH 4" SIZE WITH DIELECTRIC BREAKS AT DISSIMILAR JOINTS.
2. SHUT-OFF VALVES WILL BE BALL VALVES THROUGH 2 1/2" SIZE, AND BUTTERFLY VALVES FOR SIZES 3" AND LARGER.
3. INTERNAL PIPING AND VALVE SIZING MAY BE SMALLER THAN CONNECTION SIZES DUE TO KNOWN LENGTHS AND PRESSURE DROPS TO WHICH THE PUMP HAS BEEN SIZED
4. INSULATION OF PIPE BY OTHERS
5. CUSTOMER CONNECTION SIZES ARE BASED ON A VELOCITY NOT TO EXCEED 6FT / SEC



	TITLE:	SCALE: NONE	ENGINEERING APPROVED BY:	QUALITY CONTROL APPROVED BY:	DRAWN BY: CRB	REVISED BY:	DATE:	REV. NO:
	WATER PIPING 24WOLM88H410	DATE: 12/17/10			FILE NO: ACAD2010			
		SUB-TITLE:	PR 101275		DRAWING NUMBER: 101275W1			



ahu-1